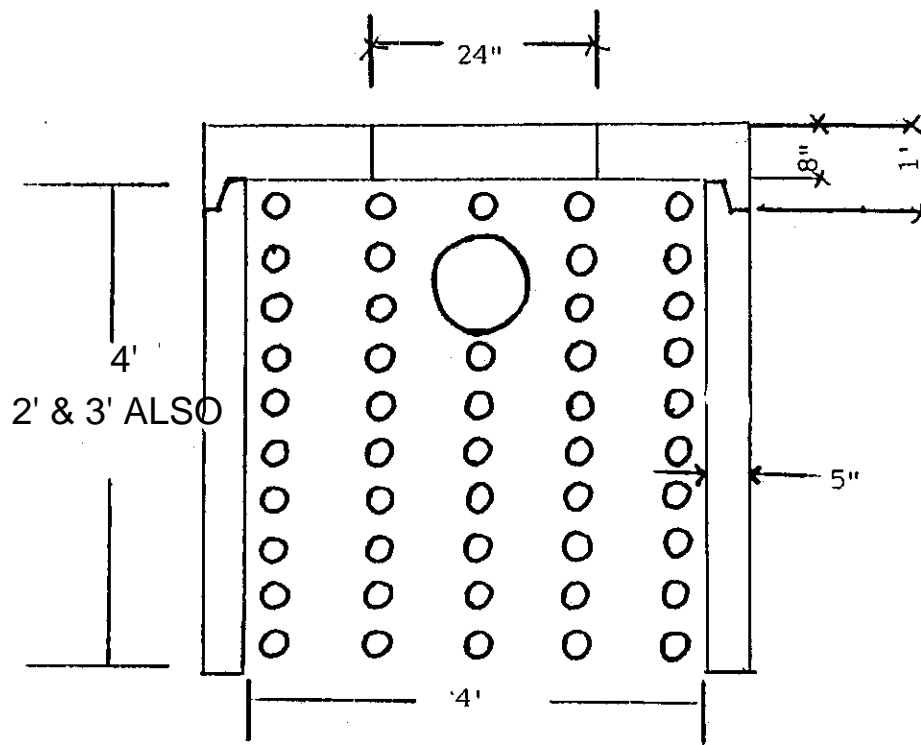


WACHUSETT PRECAST, INC.

72 Pratts Jct. Rd.
P.O. Box 901
Sterling, MA 01564

4' RISER INVERT
36" FOR 4" PIPE
18" KO @ 24"

4' DIAMETER LEACHING PIT
2', 3' 4' HIGH



GENERAL NOTES:

1. REINFORCING STEEL CONFORMS TO LATEST ASTM A185 SPEC. 0.12 SQ. IN./LINEAR FT. AND 0.12 SQ. IN. (BOTH WAYS) BASE BOTTOM
2. CONCRETE COMPRESSIVE STRENGTH - 4000 PSI MINIMUM.
3. MANHOLE DESIGN SPECIFICATIONS CONFORM TO LATEST ASTM C478 SPEC. FOR "PRECAST REINFORCED CONCRETE MANHOLE SECTIONS"

STACKABLE FOR HEIGHT
REQ'D